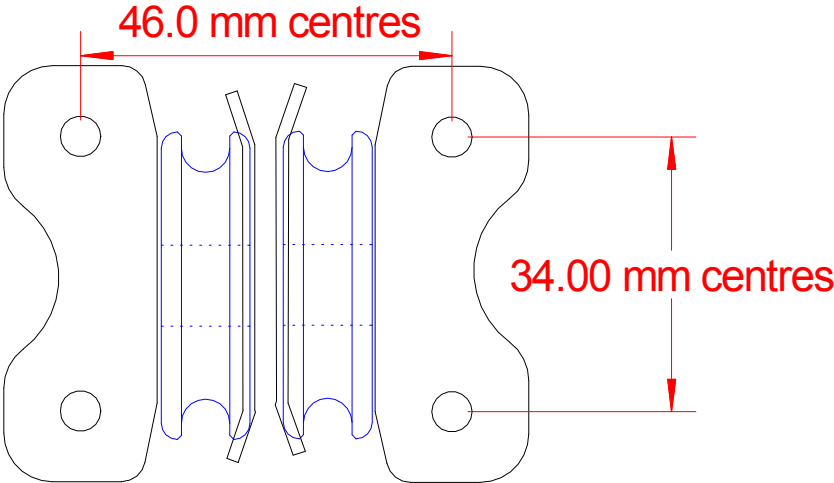
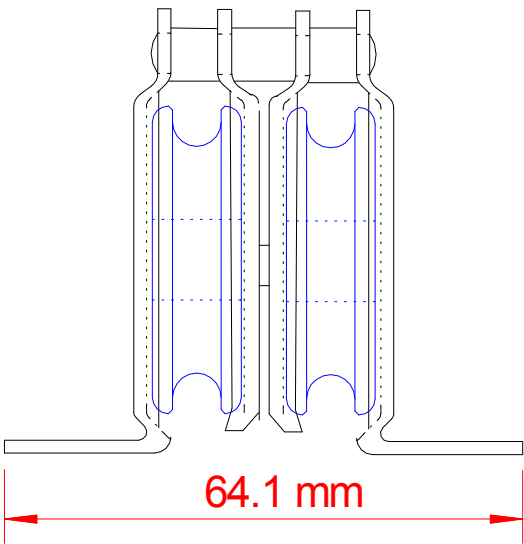
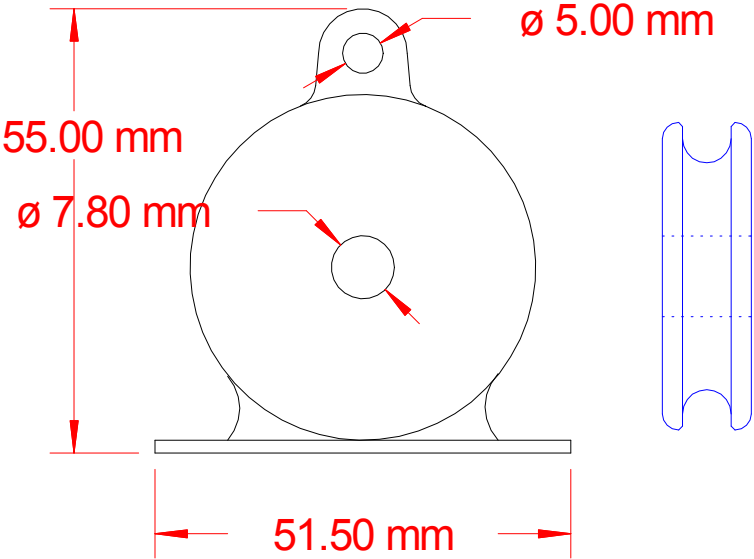


Hop 1085C



| | | | | | |
|--|--|-------------------------|---|--|--|
|  | | | Title Hopkins Blinds Double 1.5" upright pulley | | |
| Drawing No. Hop 1085C | | Revision A | Scale NTS | | |
| THIS DOCUMENT IS THE PROPERTY OF HOPKINS BLIND & SHUTTER FITTINGS LTD. THIS DOCUMENT AND ANY INFORMATION CONTAINED HEREIN MAY NOT BE REPRODUCED, USED OR DISCLOSED TO ANY THIRD PARTY WITHOUT THE EXPRESS WRITTEN PERMISSION OF THE OWNER. | | | | | |
| File I:\HOPDC00\Documents\Drawings\Alex\W10755.SKF | | | | | |
| Drawing Status PROD | | Drawn By BA | Approved By | | |
| | | Date 11/06/13 | Date | | |
| Notes | | | | | |