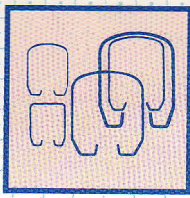
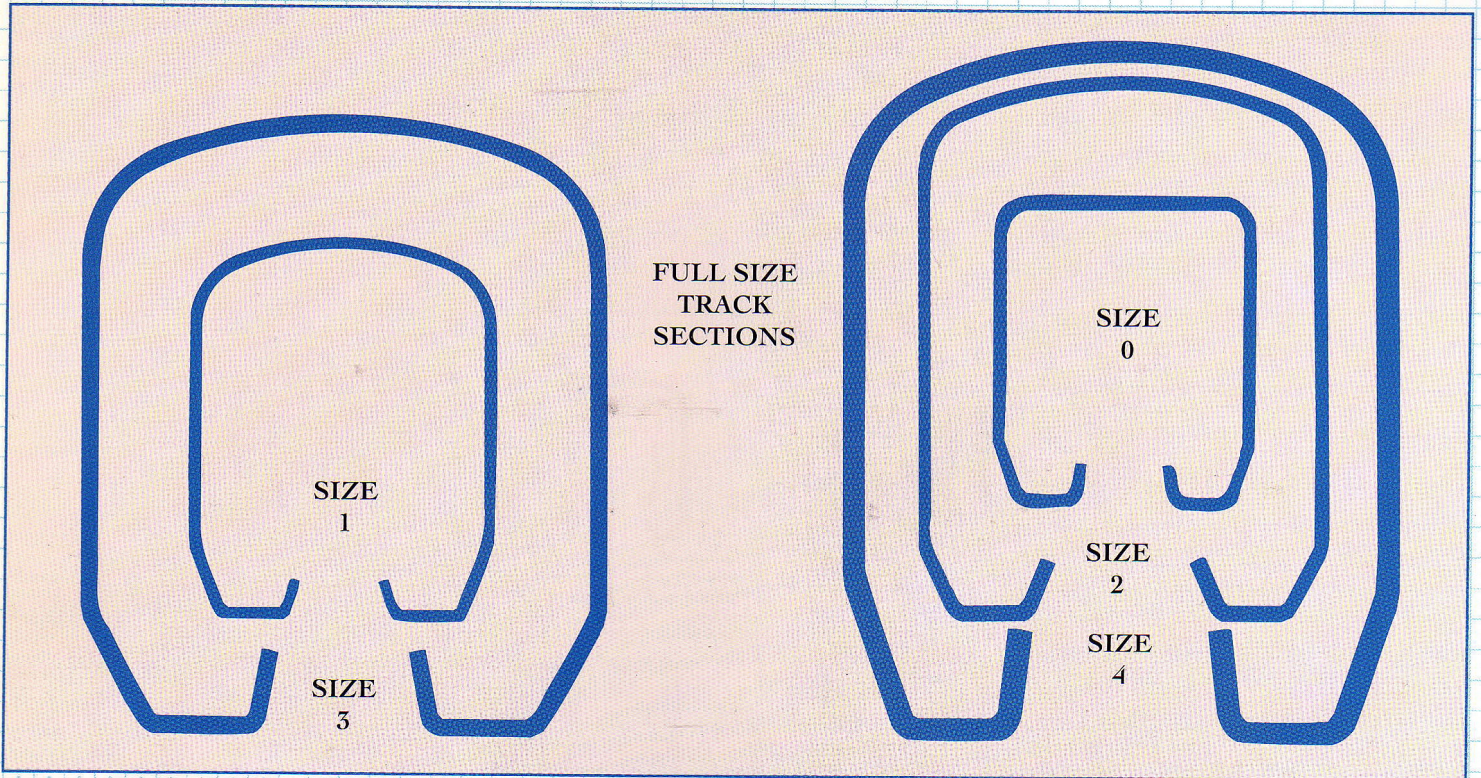


SECTION 2  
TRACK



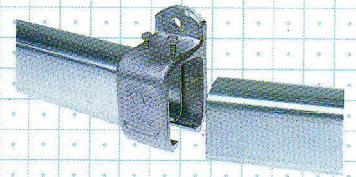
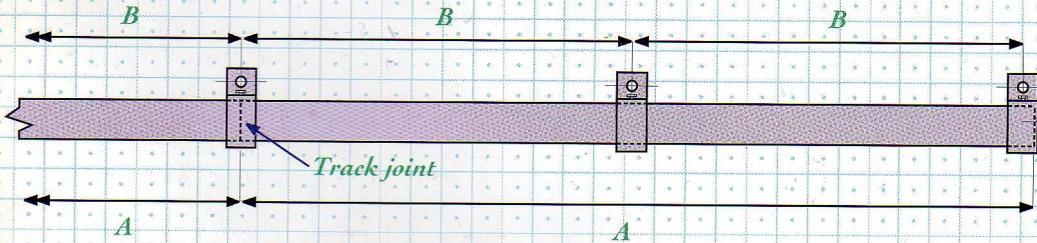
TUBULAR TRACK

KING Tubular Track is manufactured from high quality cold rolled steel strip, light coat galvanised to BS 2989. It is available in standard lengths of 1.8m, 2.1m, 2.4m, 3.0m, 4.0m, 5.0m and 6.0m (size 4 track max length 3.0m). Standard lengths can be cut to suit customers requirements before despatch, the charge being that of a standard length only.



TRACK SUPPORT BRACKETS

All brackets should be spaced at regular intervals to suit track lengths, but must not exceed 914mm centres (less under arduous conditions). Closed brackets are supplied for each end of the track runs, and it is important that these are not used as door stops. It is essential that all track joints occur at the centre of the bracket.



DOOR LENGTH A	1829	2134	2438	2743	3084	3657	4572
NORMAL SPACING B	914	711	813	914	762	914	914

TRACK DIMENSIONS

TRACK	GAUGE	A(mm)	B(mm)	WEIGHT PER LINEAR m.
0	16BG 1.6mm	41	36	1.65kg
1	14BG 2.0mm	51	41	2.51
2	14BG 2.0mm	73	54	3.17kg
3	12BG 2.5mm	83	70	5.30kg
4	10BG 3.0mm	94	75	7.44kg

