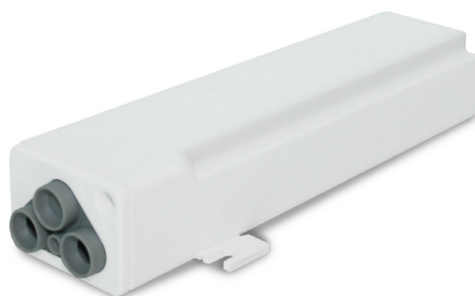


QC09



Remote Control Unit for shutters and awnings



IMPORTANT: READ CAREFULLY THESE INSTRUCTIONS

- In case of doubts about the installation, contact a qualified technician
- Disconnect supply during installation or whatever maintenance on the control

QC09 control unit for shutters and awnings is provided with a radio receiver (434,15MHz) and a facility for a pushbutton and a wind sensor. It is in a water resistant box with an internal antenna.

TECHNICAL DATA

| | | | |
|-------------------------|----------------|-------------------|-------------|
| Power supply | 230VAC 50-60Hz | Dimensions | 133X35X25mm |
| Max. motor power | 500W | Weight | 100g |
| Frequency | 434,15 MHz | IP | 55 |

The receiver can record up to 31 different codes to identify as many transmitters.
The shutter/awning is controlled by a transmitter and/or an external standard switch (normally open). You can also install a wind sensor **QCWS/QCWSRI/QCWSSRI** (option) which closes the awning automatically in case of strong wind.
The transmitter has a range of 20 mt. indoor and 100 m. outdoor.
Max. distance between wind sensor and **QC09** is 30 m.



ATTENTION: If you install several QC09 in the same room, during the first installation you will have to supply and set each unit at a time in order to avoid any interference (loss of programming or rotation inversion).

ELECTRICAL CONNECTION

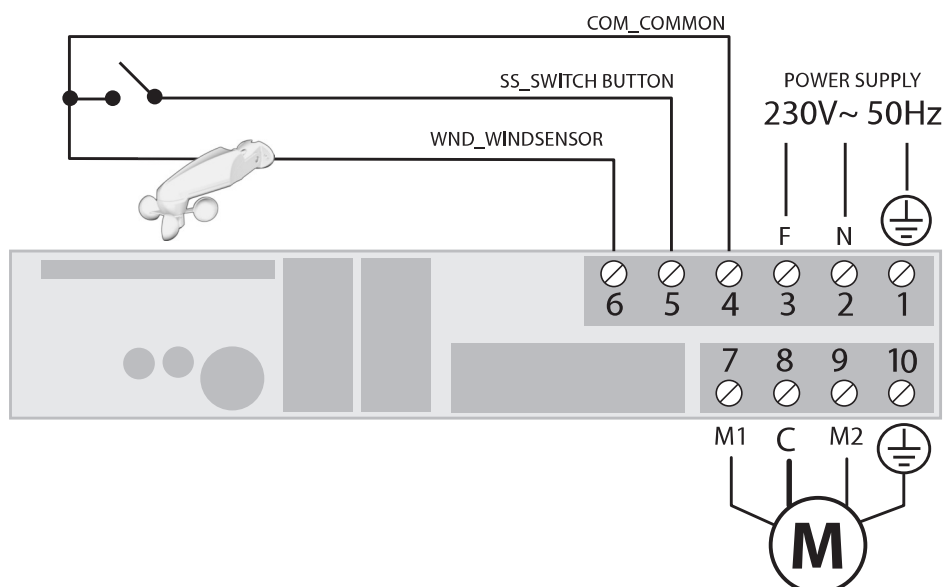
Check that the power supply corresponds to the label data. **QC09** electrical connections must be accomplished by electricians able to work in respect of the safety rules. Once wiring accomplished, the cover must be fixed with its screw.



WARNING! The QC09 has two openings in the cap for 6.5/8mm Ø electrical wires. If the diameter is too small the protection IP55 is lost.

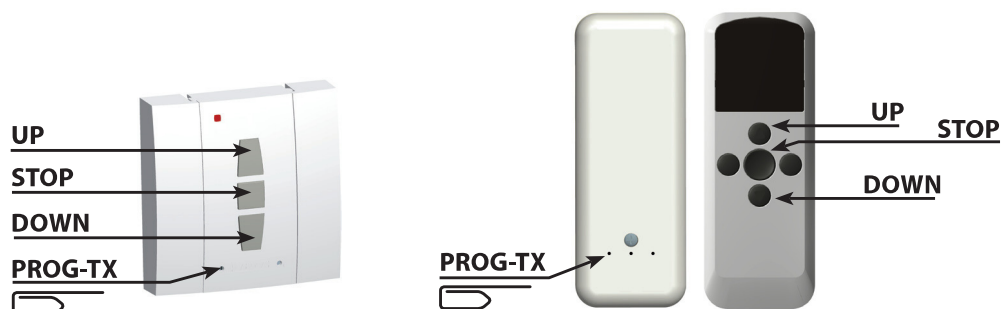
For more protection when installed outdoor, we recommend installation in vertical with cables exit facing downwards.

WIRING DIAGRAM



PROGRAMMING THE TRANSMITTER

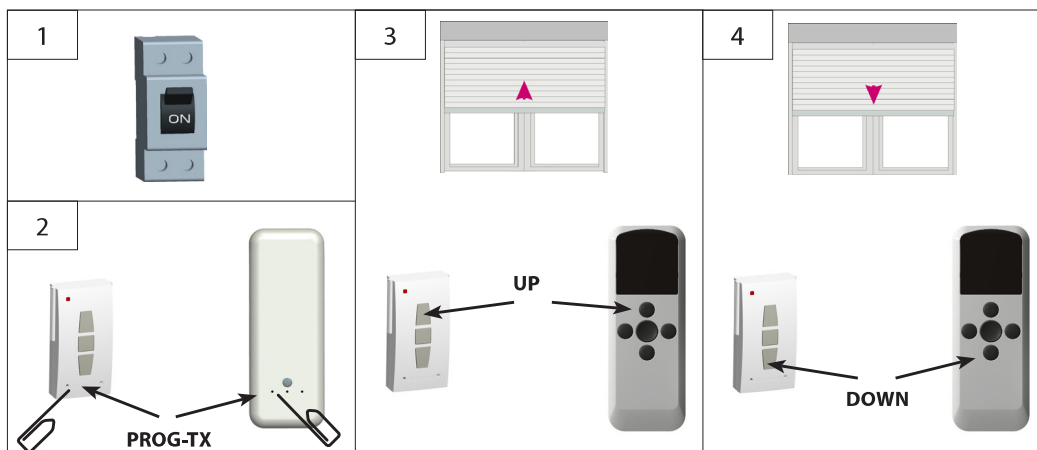
The first transmitter to be programmed is called **MASTER** and it is the only one by means of which you can enter the programming mode.



PROGRAMMING PROCEDURE

1. Power the motor
2. Press and hold **PROG-TX** button of transmitter till the motor starts moving.
3. Check the motor direction (Ex. **UP** as shown aside) then release the **PROG-TX** 5 Sec and within press the **UP** button of the transmitter.
4. If, on the contrary, pressing **PROG-TX** button the motor turns DOWNWARDS, release the **PROG-TX** button and press the **DOWN** button of the transmitter within 5 Sec.

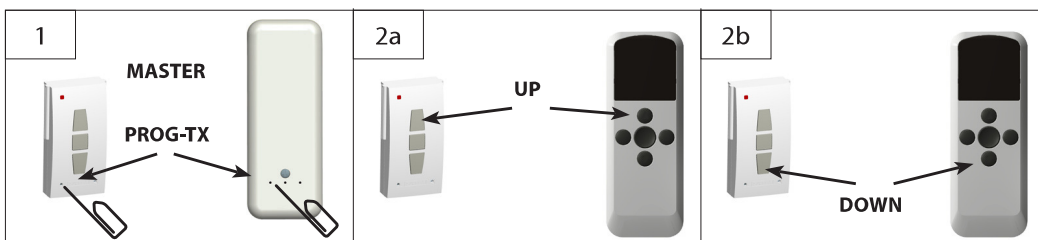
The **MASTER** transmitter is now programmed and the direction of the motor synchronized with the buttons of the transmitter itself.



The **MASTER** transmitter is now programmed and the direction of the motor synchronized with the buttons of the transmitter itself.

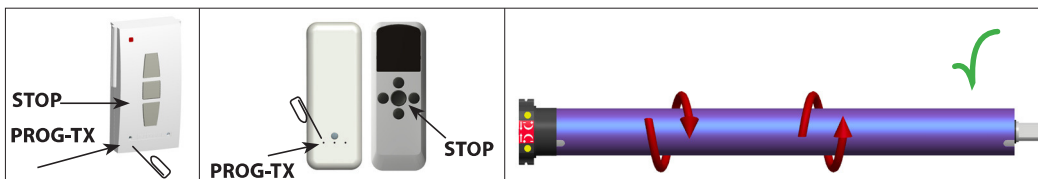
PROGRAM OTHER TRANSMITTERS

1. Press and hold **PROG-TX** button of the **MASTER** transmitter till the motor starts moving.
The motor is now in programming mode.
2. Press and hold **PROG-TX** button of the **MASTER** transmitter till the motor starts moving. The motor is now in programming mode.



RESET MEMORY

To cancel transmitters from the motor's memory, press **PROG-TX** and **STOP** buttons of the **MASTER** transmitter simultaneously and release them when the motor jogs indicating that any transmitter is cancelled.



RESET MEMORY WITHOUT THE MASTER TRANSMITTER

To cancel programmed transmitters without the **MASTER**:

1. Cut the power
2. Press simultaneously **PROG-TX** and **STOP** buttons of whatever transmitter and switch on the power till the motor jogs indicating that any transmitter is cancelled.

