

SPLIT



The Split motor is a milestone in the history of our company. It was the first type of motor Gaposa developed 45 years ago. It is a central operator for rolling doors and shop fronts with springs

Split is made up of:

- a drive wheel
- a planetary gearmotor assembly
- an integrated limit assembly

The gearmotor assembly is irreversible when it is provided with an electromagnetic brake. A declutch device is always supplied together with the brake.

Additional details

▶ EUROPEAN DIRECTIVES

Split is made in accordance with product standards EN EN 13241-1 Doors- and EN 12453 Safety for power operated doors.

▶ DUTY RATING

The Split is a single phase motor so its daily use is limited. It is perfect for garage doors and shop fronts, rolling shutters or grills while it is not recommended for doors requiring an intensive use such as parking entries.

▶ OVERLOAD SAFETY FACTOR

Motor overload safety factor = 2 x the nominal motor amperage because the starting current of the Split can reach these levels for short periods.

▶ OUTPUT SPEED

The maximum admissible speed depends on the construction and type of door. The admissible closing speed shall be tuned in order to allow the operating forces to comply with EN 12453.

▶ MANUAL OPERATION

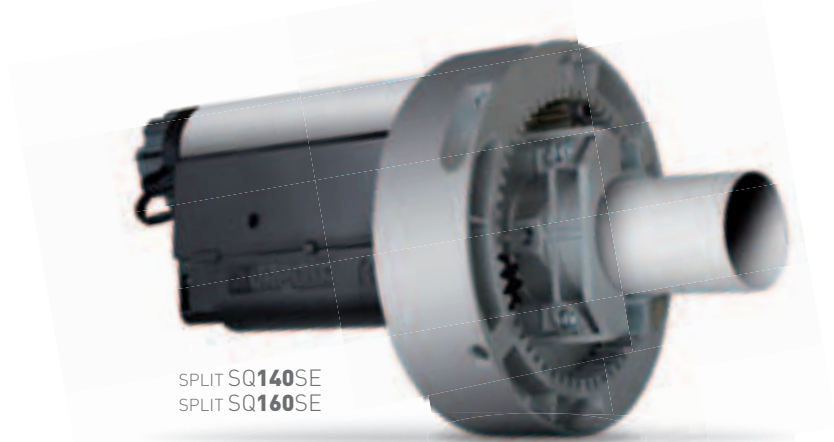
The Split without brake is a reversible motor so any manual operation of the door is possible by direct raising or lowering the door manually. The door must be well counter balanced.

The Split motor with brake is irreversible so the manual operation is only possible after declutching the electromagnetic brake. In both types of motors a spring safety brake is required (see the Split Euro-pack section on pag. 82). The counter-balancing system should be inspected at least once a year.

SPLIT

Motors for spring balanced doors,
shop fronts & garage doors

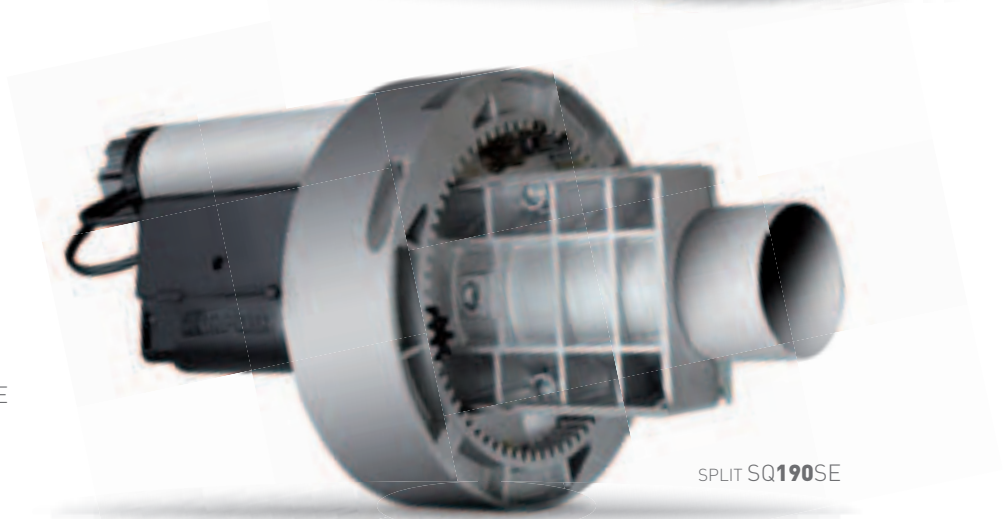
SPLIT SQ**140**
SPLIT SQ**160**
SPLIT SQ**190**
SPLIT SQ**270**



SPLIT SQ**140**SE
SPLIT SQ**160**SE

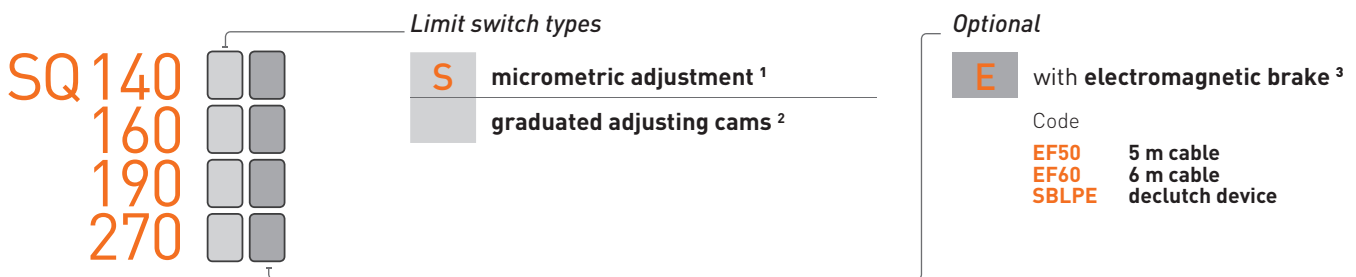


SPLIT SQ**270**SE

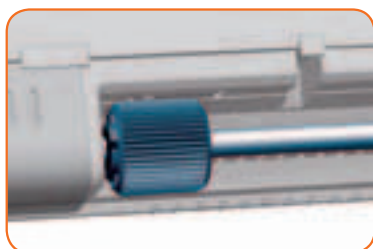


SPLIT SQ**190**SE

Range



¹ Limit switch micrometric adjustment.



² Limit switch graduated adjusting cams.



³ Electromagnetic brake with cable for declutch device.

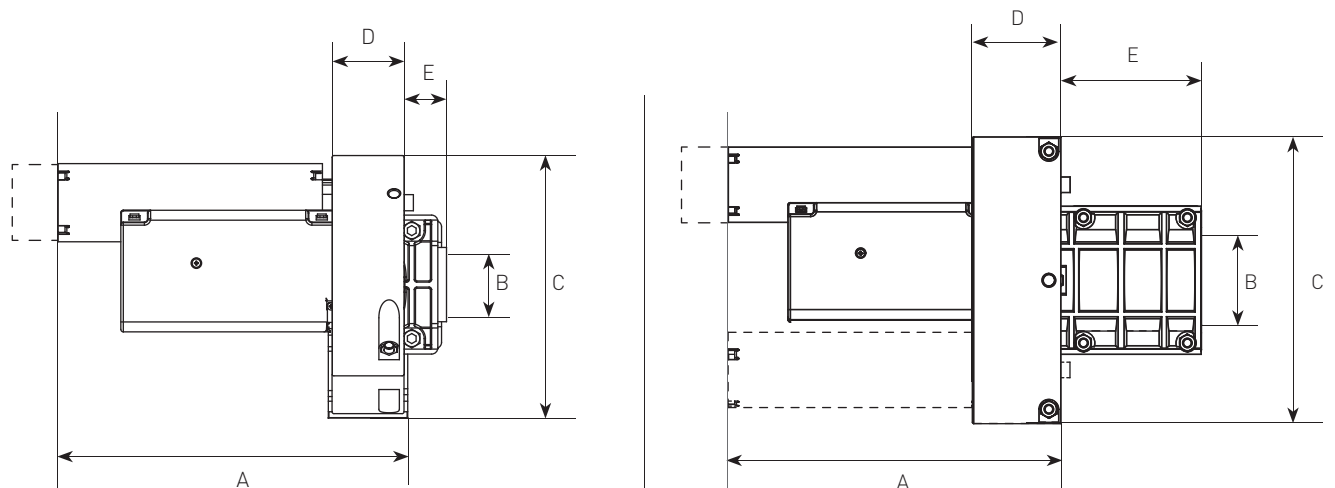


SPLIT 140 / 160 / 190 / 270

Technical details

	SQ140S	SQ160S	SQ190S	SQ270S
Torque (Nm)	130	160	190	270
Power Supply (V)	230	230	230	230
Frequency (Hz)	50	50	50	50
Absorption (A)	1.9	2	2.2	3
Power (W)	390	450	495	670
Protection Rate (IP)	42	42	42	42
Duty Rating (Min)	5	5	5	5
Output Speed (Min ⁻¹)	10	10	9	9
Limit Switch Max. Turns	8	8	7	7
Weight (Kg)	6.2	7	9.2	12

Dimensions



SEGMENT	SQ140S / SQ160S	SQ190S / SQ270S
A (mm)	279 (355 Ver. E)	279 (355 Ver. E)
B (mm)	60 (48 with collars)	76
C (mm)	200 (220 with extension wheel)	240
D (mm)	58	74
E (mm)	27	117