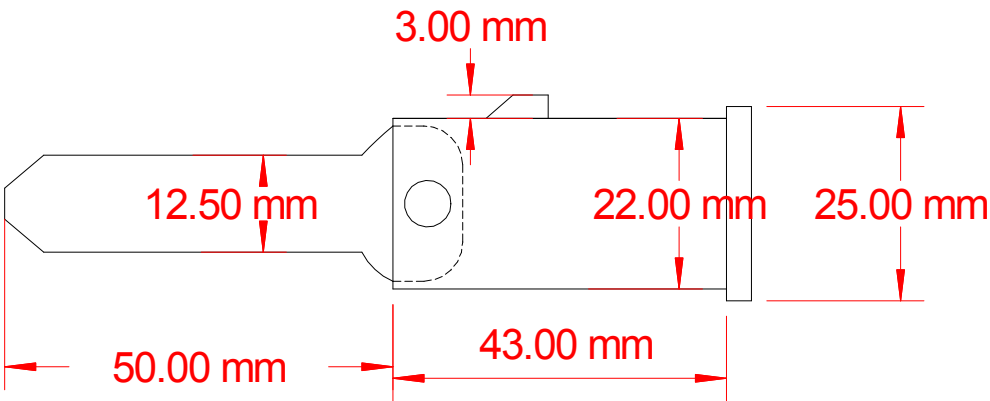
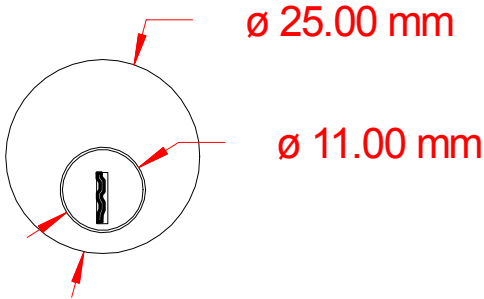
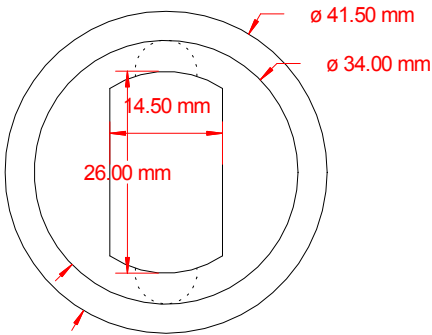
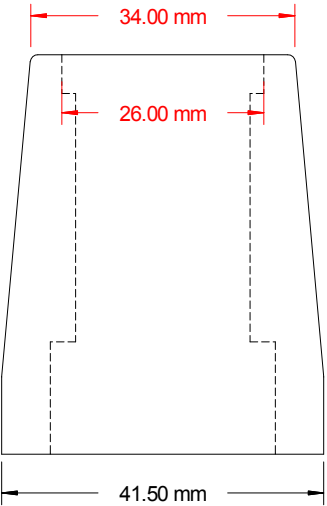


H75U



 <div>THIS DOCUMENT IS THE PROPERTY OF HOPKINS BLIND & SHUTTER FITTINGS LTD. THIS DOCUMENT AND ANY INFORMATION CONTAINED HEREIN MAY NOT BE REPRODUCED, USED OR DISCLOSED TO ANY THIRD PARTY WITHOUT THE EXPRESS WRITTEN PERMISSION OF THE OWNER.</div>		<div>Title Hopkins Blinds Lock Hub Casting C/W H75 Pin</div> <table><tr><td>Drawing No. H75U</td><td>Revision A</td><td>Scale NTS</td></tr></table> <div>File I:\HOPDC00\Documents\Drawings\Alex\WH0758.SKF</div>		Drawing No. H75U	Revision A	Scale NTS
Drawing No. H75U	Revision A	Scale NTS				
<div>Malleable Iron housing</div>		<div>Drawing Status PROD</div>	<div>Drawn By BA</div>	<div>Approved By</div>		
		<div>Date 01/07/13</div>	<div>Date</div>			
		<div>Notes</div>				